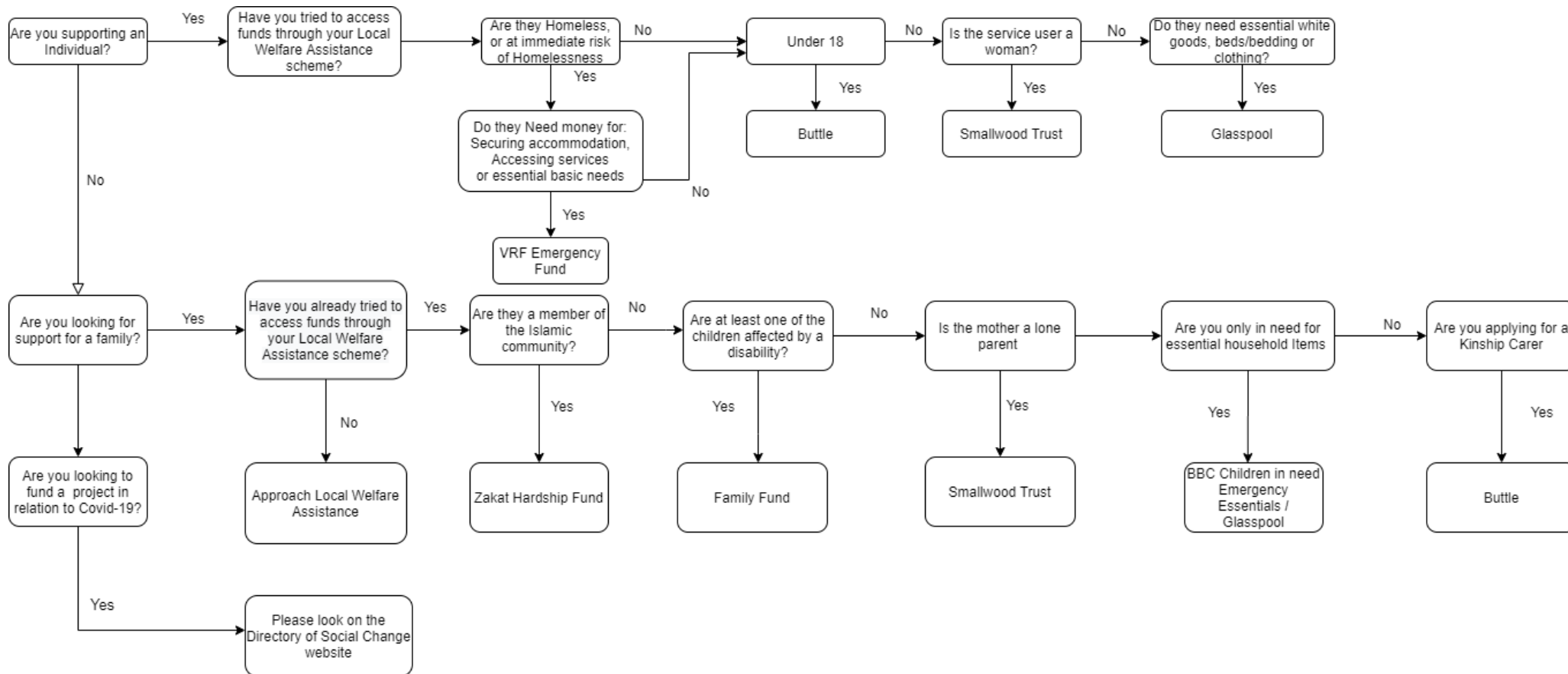


Crisis Support: National Funders

This document will support community organisations to help clients facing financial crisis by locating and accessing funding from national grant and or goods providers. It provides a breakdown of what you can get, how you can apply to and who you can make an application.

Please more note that all funds listed are provided on a discretionary basis. Funds are not guaranteed even if a beneficiary meets the eligibility criteria. Funding streams are liable to change. This document will be regularly updated, but please check an individual organisation's website for their most up-to-date information.



National Funders Summary:

Local Welfare Assistance

Local Welfare Assistance should be your first port of call. Local Authorities have a pot of money to be used on a discretionary basis to support those local residents facing immediate financial. If you are supporting someone over the age of 16 they may be eligible to receive support from the Local Authority for

- Food, shopping and accessing medication
- Essential household furniture and white goods
- Fuel and utility costs

Buttle

If you are supporting a child or young pers who is estranged from their family, living with kinship carers or who have experienced domestic abuse, you may be able to access funds from Buttle UK. Buttle UK will provide funding to:

- Essential furniture and household goods *eg. Cooker, fridge, beds & bedding.*
- Support access to training and education *e.g. Travel fees, access to a laptop, books, school uniform*
- Psycho-social support *e.g. Counselling, recreational & social activities, after school clubs*

Organisations applying for funding must register with Buttle online be able to administer the funds themselves as payments will not be made direct to beneficiary.

Family Fund

If you are supporting a family of a child with a disability or serious illness they may be able to access a range of grants from Family Fund. They provide funds for families to support:

- Essential personal and household goods e.g. Cookers, fridge, beds & bedding
- Devices to aid play and education e.g. tablets and laptops, games consoles and sensory toys,
- Items which support families to have a break: Outdoor play equipment, day trips and family breaks (CV-19 Restrictions allowing)

Family Fund also manage a separate pot of money, the Family Fund Emergency Essentials. Open to all kinds of families facing financial hardship it provides essential household furniture, white goods, kitchen equipment and baby equipment

Glasspool

Glasspool does not have any set requirements for beneficiaries, provided their needs cannot be supported through statutory funding. Glasspool provide essential household furniture and goods such as:

- White goods and essential household furniture
- Clothing, including School uniforms
- Contributions to adaptations to housing for people living with disabilities

In Kind

In Kind Direct is the UK charity providing life's essentials. Charitable organisations register online for free, and then access new goods with huge savings via their online catalogue platform. Products include:

- Household, cookware and small appliances
- Toiletries including handwash, toilet roll
- Health and beauty including feminine hygiene supplies and some OTC medicines
- Mother and Baby supplies including nappies
- Clothing and Footwear
- Work and Office
- Entertainment, sports, toys and books

Vicar Relief Emergency Fund

Vicar Relief Fund provides financial support for those without accommodation or who are immediate risk of becoming homeless. This includes ensuring people are able to access support and accommodation:

- Basic Essential needs *e.g. food, hygiene packs, utility bills*
- Overcoming barriers to support *e.g. phone credit, Wi-Fi, laptops*
- Securing accommodation *e.g. Security deposits, rent arrears*

Smallwood Trust

Smallwood trust provide funds to a broad range of organisations for a broad range of issues, provided the project supports women and the families of lone mothers. They do not have strict list of items or services they fund, provided the money helps provide:

- Sense of financial wellbeing and being able to cope with adversity
- Ability to manage finances including debt
- Ability to cope with unexpected expenditure
- Access to appropriate jobs and skills

Smallwood Trust have joined up with Glasspool to provide emergency support for woman living alone or with dependents. This is to provide women facing financial hardship with a broad range items and support including:

- White goods, household furniture, cooking equipment
- Support to re/accessing work *e.g. travel costs, clothing etc.*
- Support with utility bills, rent arrears and childcare costs

Zakat Foundation

Zakat foundation provides financial support to Muslim families and individuals who are facing financial hardship, so they can purchase key goods or for debt relief. They will finance:

- Costs for basic needs, such as utilities, white goods and furniture and access to food:
 - Single person: £400
 - Couple £650
 - £50 for each child under the age of 18
- £400 for small debts relief

National Funders:

Local Welfare Assistance scheme	5
Buttle	5
Buttle: Kinship.....	6
Buttle: Domestic Abuse.....	7
Family Fund	8
Family Fund: BBC Children in Need Emergency Essentials	9
Glasspool.....	10
Glasspool Smallwood Partnership	11
In Kind.....	12
Smallwood Trust.....	12
Vicar Relief Emergency Fund	13
Zakat Hardship Fund.....	14

Local Welfare Assistance scheme			
	<p>Who can apply?</p> <p>Beneficiary must be a Norfolk resident aged 16 or over to apply and will be asked a set of questions to check eligibility. A person may be entitled if they meet any of the following criteria:</p> <ul style="list-style-type: none"> • Receive or have applied for an income-related benefit (including those who are self-employed or have recently been laid off work) • Have ceased working and awaiting salary payment through the government scheme • Have dependent children • Have a disability or mental health problem • Are fleeing domestic violence • Need help to remain in the community • Are part of a planned resettlement scheme (removals are suspended through NAS, but we can assess you for van hire/alternative removal companies) 	<p>What can you apply for?</p> <p>Urgent help with food, cash or household items.</p> <p>The scheme can also help provide essential household items such as white goods and beds.</p> <p>Urgent help with shopping, medication and other tasks</p> <p>Urgent help with gas and electricity costs</p> <p>Help with fuel costs</p>	<p>How to apply?</p> <p>You can apply online using the online form, guidance on how to fill out the application form can be found here.</p> <p>However, requests for emergency cash or food due to the coronavirus situation should be made via phone on 01603 223392.</p>
<u>Buttle</u>			
<p>Covid-19</p> <p>Fully operational during Covid-19. However:</p> <p>Buttle UK will not be providing funding for leisure activities, family days out, counselling or anything that involves being in the community</p>	<p>Who can apply?</p> <p>To be eligible for support the beneficiary must be:</p> <p>Age 16-20</p> <p>Estranged or orphaned and living outside the family home, receiving little or no financial or emotional support from family members</p>	<p>What can you apply for?</p> <p>Equipment to take up a training opportunity</p> <p>Interview clothes</p> <p>A computer for their studies</p> <p>Travel costs to get to college</p> <p>Bed and bedding</p>	<p>How to apply?</p> <p>Applications must be made by a support worker, on behalf of the beneficiary.</p> <p>Before an application is made, you will need to register using the online form and provide basic information about your organisation and this will need to</p>

<p>Focus and priority will be on:</p> <ul style="list-style-type: none"> Maintaining educational activity and stimulus within the home environment Establishing and or maintaining internet access and electronic communications Household essentials 	<p>In financial hardship</p> <p>Committed to pursuing a defined goal in relation to education, training or employment. This criteria may be waived if the young person has been a victim of domestic abuse and lives or lived in London.</p> <p>Working closely with support services</p> <p>Normally resident in the UK with the intention to remain in the country long term</p> <p>Applicants must have ensured that every effort has been made to check that a statutory, education or governmental body cannot fund the activity or item being requested.</p>	<p>Cooker</p> <p>Fridge</p> <p>Pots and pans</p> <p>Recreational or social activities</p> <p>Sports or gym membership</p> <p>Counselling</p>	<p>be verified by Buttle before an application can be submitted</p> <p>Applications can be made online via the same platform as registration.</p> <p>Organisations applying will need to be able to administer funds.</p>
--	--	--	--

Buttle: Kinship

Covid-19	Who can apply?	What can you apply for?	How to apply?
<p>Fully operational during Covid-19. However:</p> <p>Buttle UK will not be providing funding for leisure activities, family days out, counselling or anything that involves being in the community</p> <p>Focus and priority will be on:</p> <ul style="list-style-type: none"> Maintaining educational activity and stimulus within the home environment 	<p>To be considered for enhanced support, applicants must be:</p> <p>Children or young people aged 18 or under; in financial hardship and who have experienced at least one other social issue – such as for example, mental or physical ill-health, neglect, homelessness, or bereavement.</p> <p>Receiving on-going, regular support from a professional organisation.</p> <p>Normally resident in the UK with the intention to remain in the country long term.</p> <p>Applicants must have ensured that every effort has been made to check that a statutory, education or</p>	<p>Essential home furniture and goods such as:</p> <ul style="list-style-type: none"> A cooker A child's bed Items to decorate or personalise a child's bedroom Clothing and school uniform Toys and baby equipment Help with moving costs <p>Help access to:</p> <ul style="list-style-type: none"> Clubs to help them integrate into a new community or build relationships with their peers, for example, after school clubs Activities that allow a child to explore their feelings for example drama or art club Therapy for example, art therapy or play therapy 	<p>Applications must be made by a support worker, on behalf of the beneficiary.</p> <p>Before an application is made, you will need to register using the online form and provide basic information about your organisation and this will need to be verified by Buttle before an application can be submitted</p> <p>Applications can be made online via the same platform as registration.</p> <p>Organisations applying will need to be able to administer funds.</p>

<ul style="list-style-type: none"> Establishing and or maintaining internet access and electronic communications Household essentials 	<p>governmental body cannot fund the activity or item being requested.</p> <p>Applicants must have already exhausted all other sources of public funds for which they are eligible, including their Local Authority's Welfare Provision Scheme.</p>	<p>(These will be impacted by Covid-19)</p> <p>Books and educational toys such as:</p> <ul style="list-style-type: none"> Educational supplies such as laptops, stationery and equipment School uniforms Tutoring lessons Homework club Tools and technical equipment Travel costs to and from college 	
---	---	---	--

Buttle: Domestic Abuse

Covid-19	Who can apply?	What can you apply for?	How to apply?
<p>Fully operational during Covid-19. However:</p> <p>Buttle UK will not be providing funding for leisure activities, family days out, counselling or anything that involves being in the community</p> <p>Focus and priority will be on:</p> <ul style="list-style-type: none"> Maintaining educational activity and stimulus within the home environment Establishing and or maintaining internet access and electronic communications Household essentials 	<p>To be considered for enhanced support beneficiary must be:</p> <p>Children aged 18 or under living with parents or carers or young people aged 20 and under who have recently experienced domestic abuse and are in the rehousing or post-housing stages.</p> <p>Be in financial hardship.</p> <p>Receiving on-going, regular support from a professional organisation.</p> <p>Normally resident in the UK with the intention to remain in the country long term.</p> <p>Applicants must have already exhausted all other sources of public funds for which they are eligible, including their Local Authority's Welfare Provision Scheme.</p>	<p>Psycho-social support such as:</p> <ul style="list-style-type: none"> Therapy – for example art therapy or play therapy After-school clubs to help them integrate into a community or build relationships with their peers Activities that allow a child to express themselves; for example drama or art clubs <p>We can consider things such as:</p> <ul style="list-style-type: none"> Essential home furniture such as a cooker or a child's bed Items to decorate or personalise a child's bedroom Clothing and school or work uniform Toys and baby equipment Help with moving costs 	<p>Applications must be made by a support worker, on behalf of the beneficiary.</p> <p>Before an application is made, you will need to register using the online form and provide basic information about your organisation and this will need to be verified by Buttle before an application can be submitted</p> <p>Applications can be made online via the same platform as registration.</p> <p>Organisations applying will need to be able to administer funds.</p>

Family Fund

Covid-19

We are putting measures in place to ensure we can continue to provide essential grant support. However, we do expect delays in some areas given the impact of Coronavirus on our team and suppliers.

Families can find out about any changes or updates to [their grant](#) during the Covid-19 outbreak or changes and updates to the [application process](#) at this time.

Family Fund can now help families once every 9 months.

Families should hear from Family Fund within 10 weeks.

All events until the end of June 2020 cancelled. This includes all digital skills training events and information and support days.

Kitchen appliances – AO will continue to deliver appliances, but all electrical retailers are temporarily suspending their installation services on some products due to the length of time required to be in the customers' property. Cookers will still be installed.

In light of Coronavirus we understand family breaks

Who can apply?

Family Fund help families across the UK who are raising a disabled or seriously ill child or young person aged 17 or under.

You can apply to Family Fund if:

You live in England, Northern Ireland, Scotland or Wales

You are the parent or carer of a disabled or seriously ill child or young person aged 0-17 who lives with you

You are currently living in the UK and done so for at least six months, or three months if your child is less than six months old. You are eligible to work and apply for public funds

The child is not in Local Authority care
Families need evidence of entitlement to any one of the following:

- Universal Credit
- Child Tax Credit
- Working Tax Credit
- Income-based Jobseeker's Allowance
- Income Related Employment Support Allowance
- Income Support
- Housing Benefit
- Pension Credit.

The child or young person has a high level of additional support needs arising from a long term disability or disabling condition or a serious or life limiting illness. Please read our [disability criteria](#).

If the family is not in receipt of any of the benefits listed above but on a low income they may still apply but you will need to provide extra information about the household income. Grants are

What can you apply for?

Our aim is to support families with grants that will make a real difference, and we can provide grants for a wide range of items.

Our grants include essential goods such as washing machines, cookers, dishwashers, furniture, clothing and bedding.

We also provide technology such as tablets, laptops and games consoles.

Items which help with play and recreation including sensory toys, family breaks and outdoor play equipment.

We offer grants for many more things too, and are happy for families to [contact us](#) with requests for things that they can prove will help meet your child's additional needs.

How to apply?

<https://www.familyfund.org.uk/FAQs/how-do-we-apply>

Families may be able to [apply online](#), [download an application form](#) or ask for [one to be sent](#) to them.

After you have been awarded a grant, you can submit another application nine months from the date of your last award letter.

If need help with making an application watch our [how to apply video](#).
If you are unsure about any of the information provided or need further help, please contact us.

Family Fund can now help families once every 9 months.

<p>abroad and across the UK will be affected. You will need to check directly with your family break supplier</p> <p>Family Breaks: Families can either save their grant to go on a break when this is all over or change their grant for another item following the change of request process. This takes approx. 4 weeks.</p>	<p>discretionary and subject to available funding. A family must meet all Family Fund eligibility criteria in order to be considered for a grant</p>		
---	--	--	--

Family Fund: BBC Children in Need Emergency Essentials			
Covid-19	Who Can Apply?	What can you apply for?	How to apply?
<p>Fully operational and intend to respond within 10 days.</p> <p>See website</p>	<p>This Fund will provide support for :</p> <ul style="list-style-type: none"> • Vulnerable children and young people up to the age of 18 who are experiencing a crisis or emergency. • UK or EU citizens who are normally resident in the UK. <p>They will only accept one application per household within a 12 month period and will not support:</p> <ul style="list-style-type: none"> • Adults aged 18 and over. • Those who do not meet income criteria as defined by the programme. • Those who are leaving care who have access to separate, specific statutory provision. 	<p>The fund is only for essential household goods:</p> <ul style="list-style-type: none"> • Electric cookers • Furniture • Kitchen equipment and small appliances • Children’s beds and bedding (including cots) • Washing machines and tumble dryers • Fridges, freezers and fridge-freezers • Baby equipment • Clothing <p>*NB this guidance is due to be updated 1st June</p>	<p>To apply you will need to be a registered referrer who is part of an organisation that is supporting the family or young person and capable of assessing their needs. You can do this by visiting our site</p> <p>The referrer’s organisation should also be able to administer and supervise the grant on our behalf. Referrer guidelines can be read here.</p> <p>To apply you will need to register online, once registration is completed you will need to apply online.</p>

Children and young people who do not meet the residence criteria as defined by the programme.

Glasspool

Covid-19

Submitted applications are proceeding as normal

Not taking applications for:

Flooring,

Washing machines,

Dryers,

Bedding

once social distancing restrictions end Flooring, Washing machines, Dryers, will be restarted

Applications for bedding paused until 19th May

Unable to fund requests for other items of furniture such as: sofas, wardrobes or table/chairs, except in cases where the applicant is experiencing severely poor physical or mental health or has complex needs.

Updated GDPR/safeguarding policy to allow verbal consent

Who can apply?

There are no set requirements for the beneficiary. However, Glasspool will not provide a grant where statutory funding is available and

Applications can only be made by third party.

The Third Party must be:

- A statutory organisation, charity, social enterprise, industrial or provident society, co-operative or community benefit society providing or funding support services such as: health or social care, rehabilitation, advice or advocacy services, or training and associated support; Or A private company contracted by a statutory organisation to provide the support services outlined above.

The organisation must have a turnover of £25,000, the threshold over which an organisation must produce independently examined accounts.

Where an organisation has a turnover of less than £25k, they must provide a reference from a statutory body and a set of their latest accounts.

What can you apply for?

Listed in the priority these applications will be considered:

- White goods
- Beds & bedding
- Clothing, including school uniforms
- Baby needs
- Flooring where there is an exceptional circumstance for people with disabilities
- Other Household Furniture where there is substantial disability/illness
- Television/TV Licence where there is a permanent or substantial disability/illness.

Contribution towards equipment and adaptations for people with disabilities where there has been an occupational health therapist recommendation.

How to apply?

Applications must be made by third party/community organisation,

You must register with glass pool before you make an application.

Registration and applications submitted and processed through <https://www.grantsplus.org.uk/> application portal.

Expectation beneficiary has made an application to the relevant Local Welfare Scheme. Grants given only when **no** statutory funding is available.

This includes:

- Benefits due to the client are still being applied for – expect benefits appeals system in maximising the income available exhausted for your client.
- Where your client is eligible to apply to a Local Welfare Scheme and an application has not been made or is currently being considered.
- Social Services are involved and statutory assistance has not been applied for.
- There are other more appropriate charities that can be applied to e.g. your client is/has previously been

	<p>Charity must be registered with the Charity Commission. Housing association must be a private provider of social housing, registered with the Homes & Communities Agency.</p> <p>Referring agencies must have a bank account in its own name and be able to bank and administer grants on glass pool's behalf. Payments will only be made to the referring agency.</p>		<p>employed and an occupational charity can assist.</p>
--	---	--	---

Glasspool Smallwood Partnership

	Who can Apply?	What can you apply for?	How to apply?
	<p>A grant from both organisations will typically be offered where a woman is living on her own (or with dependent children) and not co-habiting or living with another adult.</p> <p>She may have experienced or is living with:</p> <ul style="list-style-type: none"> • Reduced income due to redundancy • Reduction in working hours • Fluctuating income (zero hours contact) • Insufficient benefit income to meet daily needs • Domestic abuse • Poor mental or physical health 	<p>Eligible items from the Smallwood Trust</p> <p>Debt Relief Order (must have a debt management plan in place)</p> <ul style="list-style-type: none"> • Rent Arrears/Council Tax Arrears (contribution only) • Utility/Water Arrears • Debt – Credit cards/Loans/other (contribution only) • Moving Costs • Household Items (excluding white goods) • Back to Work Costs (including travel, interview clothing, equipment and initial childcare costs) • Travel to work costs Childcare costs • Support towards rent or council tax arrears • Other essential items Eligible items from the Glasspool Charity Trust • Cookers (delivery and installation – supplied by AO) • Fridge-freezers (delivery to home but not unpacking or plugging-in – supplied by AO) • Washing machines, washer-dryers, under the counter fridges or freezers (not supplied by AO, but local supplier may be able to meet request) • Bedding (supplied by Dreams) • Beds (supplied by Dreams to the doorstep) 	<p>Applications must be made by third party/community organisation,</p> <p>Applications submitted and processed through https://www.grantsplus.org.uk/ application portal</p> <p>Expectation beneficiary has made an application to the relevant Local Welfare Scheme. Grants given only when no statutory funding is available.</p> <p>Please see Glasspool application process.</p>

- Clothing

In Kind

Covid-19

Fully operational, here is their [service update](#) message.

Who can apply?

In Kind Direct works with UK charitable organisations of all sizes. That includes registered charities, constituted community groups, social enterprises, local authority funded schools and some public sector run projects. If the organisation works overseas, it needs to be registered in the UK. They are unable to work directly with individuals.

What can you apply for?

Once registered, organisations can access the full range of products, donated by leading manufacturers and retailers including P&G (e.g. Pampers, Gillette, Always and Tampax), Kimberly-Clark (eg. Andrex and Huggies), Essity-Bodyform, PZ Cussons, Unilever, Disney Amazon and many, many more.

Products distributed by In Kind Direct can be used to:

- Give to the people your organisation directly supports for free
- Help run your projects and activities
- Maintain your facilities

Products cannot be shared with other organisations (but they can register for free as well) or sold.

By registering for free, organisations can also access further benefits with other trusted partners. [Some schemes may be affected by COVID-19 restrictions but will return as soon as possible.]

- Ryman – in-store savings
- Robert Dyas – in-store savings
- RICOH – huge savings on colour photocopiers
- Office Depot – office and cleaning supplies including furniture
- Directory of Social Change – beneficial rates on training, events and funding resources
- Enterprise UK – car and van hire
- Disney – opportunity to partner with local stores

How to apply?

Complete a registration form online [here](#).

Registration is free and they aim to have organisations up and running in three working days. There is a small charge for products, which is a contribution towards the cost of the service and includes UK delivery – as a charity, In Kind Direct meet the rest.

If your organisation isn't registered with the Charity Commission, Charity Commission for Northern Ireland, OSCR or Companies House, a member of the team will contact you for any further information needed to process your registration.

For any further information, visit the [website](#) or take a look at their [Help](#) section

Smallwood Trust

Covid-19

Applications continuing on as usual, although

Who can apply?

Smallwood trust provides grants for disadvantaged women. In some cases these can be accessed directly by service users themselves, [eligibility criteria](#)

What can you apply for?

Organisations can apply for funds for women focused and/or women lead community programmes and projects that provide a range of targeted financial

How to apply?

Due to broad eligibility of the organisations Smallwood may fund, to make an application for funding you first

responses may be slightly slower.

Smallwood provides support for women who have been in persistent poverty: being in relative income poverty in the current year and at least two of the three preceding years (Office of National Statistics, 2017)

Women with multiple and complex needs who might include some on the following groups:

- Lone parents who are not working or receiving support from mainstream services
- Young women aged 18-30 years who are unemployed or economically inactive, including care leavers
- Black and minority ethnic groups, particularly those deemed most at risk such as women from migrant communities
- Women who have experienced or who are at risk of homelessness
- Women with depression and/or anxiety
- Women with disabilities
- Women looking after young children at the same time as caring for older relatives
- Women who are survivors of abuse
- Women with caring responsibilities

support that helps disadvantaged women to have access to and control over personal economic resources

Smallwood Trust has a broad criteria, as long as you can evidence that it will provide:

- Sense of financial wellbeing and being able to cope with adversity
- Ability to manage finances including debt
- Ability to cope with unexpected expenditure
- Access to appropriate jobs and skills

They also provide funding for “life situations” such as:

- Living on a low income which does not cover basic living needs
- Reduced income due to redundancy
- Reduction in working hours
- Fluctuating income (zero hours contract)
- Travel to work costs
- Interview clothes
- Childcare costs
- Fleeing domestic abuse
- Support towards rent or council tax arrears
- Migration from employment to benefits due to ill health
- Unexpected occurrence which has caused unplanned expense

need to make an enquiry using the contact details of the trust:

0300 365 1886 (for all new helpline and financial assistance enquiries)

01684 574645 (for office administration only)

info@smallwoodtrust.org.uk

Lancaster House
 25 Hornyold Road
 Malvern
 WR14 1QQ
 United Kingdom

Vicar Relief Emergency Fund

Covid-19	Who can apply?	What can you apply for?	How to apply?
The Vicars Relief Fund. The VRF launched an	VRF are only accepting applications from paid frontline workers who provide support to people experiencing		

<p>emergency fund on the 8th April.</p> <p>This Emergency Fund provides grants under the categories of:</p> <ul style="list-style-type: none"> • Basic Essential Needs, • Overcoming Barriers to Support • Securing Accommodation to those affected by the COVID-19 crisis. <p>Updated GDPR/safeguarding policy to allow verbal consent</p>	<p>homelessness or whose accommodation might be at risk. Frontline workers include staff working in the voluntary, statutory and public sectors.</p> <p>For example:</p> <ul style="list-style-type: none"> • Resettlement or Outreach workers, • CAB advisers, • Supported Housing Officers, • Mental Health Workers, • Drug and Alcohol Support, • GPs, • Probation Officers, • Social Workers, • Prison in-reach workers, • Police, • Health Professionals. 	<p>£150 for Basic Essential Needs: food, hygiene packs, utility bills.</p> <p>£400 for Overcoming Barriers to Support: mobile phone, laptop, tablet, Wi-Fi and data access</p> <p>£1000 for Securing Accommodation: deposit to access and/or secure accommodation, rent areas where there is a risk of eviction.</p> <p>BACS payments made to organisations or landlords, in exceptional cases direct to individual</p> <p>You will need to provide evidence of spend and outcome of the grant: detail here</p>	<p>All applications must be submitted by a third party as specified in column 2.</p> <p>You will need to register before submitting an application</p> <p>You can register and apply online via: https://smitf.flexigrant.com/</p> <p>This page includes guidance on how to apply and eligibility criteria.</p> <p>You will need to provide evidence of need for an application, suitable evidence can be found here:</p> <p>https://frontlinenetwork.org.uk/media/2045/grant-categories-and-evidence.pdf</p> <p>The application portal and GDPR policy statement can be found https://smitf.flexigrant.com/policy.aspx?farea=985</p>
---	---	---	---

<p><u>Zakat Hardship Fund</u></p>			
	<p>Who can apply?</p> <p>To apply, you must be a Muslim living in the UK and be entitled to receive Zakat. To confirm that you can get help, we will look at how much money you have, your monthly income and expenses.</p> <p>Grants are only available to people who fall into one of the following categories:</p> <p>Have the right to live in and work in the UK (excluding full-time university students); or Have claimed asylum in the last 3 months; or</p>	<p>What can you apply for?</p> <p>Zakat will provide money so beneficiaries can access basic needs, such as food, white goods, household furniture and food</p> <p>For Basic Costs</p> <ul style="list-style-type: none"> • Single person: £400 • Couple: £650 • For each child (under 18): £50 <p>For Small Debts</p> <p>You can get up to £400 towards any small debts you may have.</p> <p>We may also signpost or refer you to other organisations that may be able to help you based on your situation.</p>	<p>You can apply online apply online and individuals can apply directly</p> <p>Photo ID for you, your wife/husband and children under 18</p> <p>Bank statements – We will need 3 full months of bank statements</p> <p>If you are also applying for help with small debts, you will need to give us:</p> <p>Debt documents – Statements for any money you owe on credit cards or bank loans. Gas and electricity bills.</p> <p>You may need provide evidence if you have:</p>

	<p>Been refused asylum in the last 3 months</p>		<p>Claimed asylum in the last 3 months (for fresh asylum claims only)</p> <ul style="list-style-type: none">1) Letter from Home Office or Immigration Tribunal dated in the last 3 months2) ARC Card <p>Refused asylum in the last 3 months</p> <ul style="list-style-type: none">1) Letter from Home Office or Immigration Tribunal dated in the last 3 months <p>Have the right to live in and work in the UK (excluding full-time university students)</p>
--	---	--	--